

State of Wyoming Corner Record

(In compliance with the CORNER PERPETUATION AND FILING ACT, Wyoming Statutes, 2013 Section 33-29-901 through 33-29-910, and the Rules and Regulations of the Board of Professional Engineers and Professional Land Surveyors)

Reverse side of this form may be used if more space is needed.

Record of original survey and citation of source of historical information (if corner is lost or obliterated). Description of corner monumentation evidence found and/or monument and accessories established to perpetuate the location of this corner. Sketch of relative location of monument, accessories, and reference points with course and distance to adjacent corner(s) (if determined in this survey). Method and rationale for reestablishment of lost or obliterated corner.

RECORD: Red Sandstone 22x10x8. Surveyed June/July 1871 by James and Rogers.

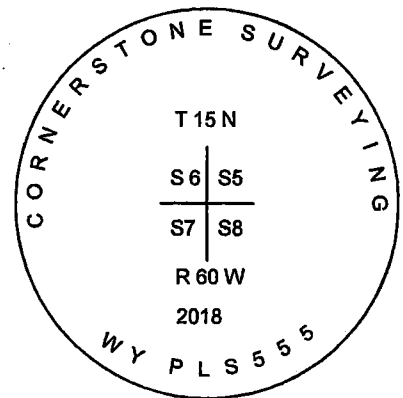
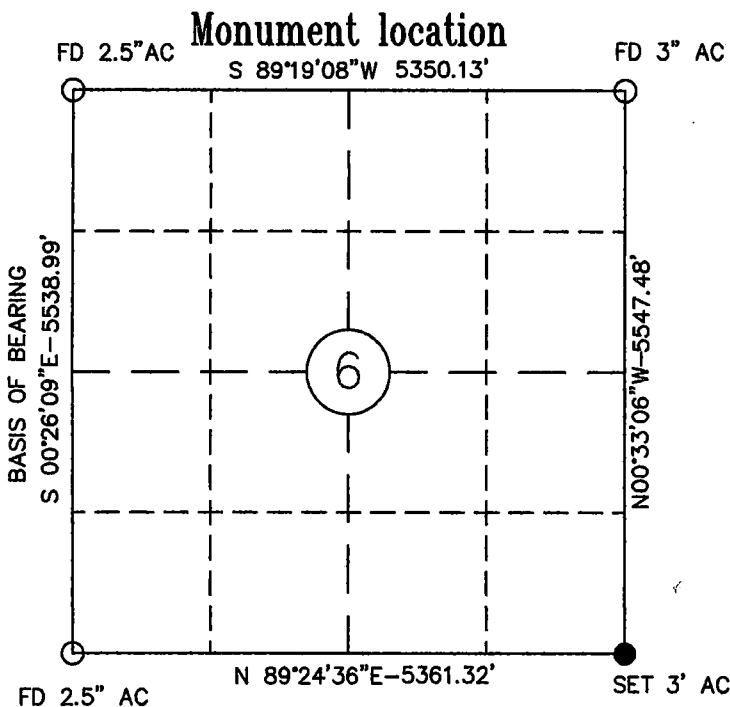
FOUND: 5/8" Rebar along powerline and farm field road as described in Wyoming State Engineer's Water Rights records

SET: 3 inch Aluminum Cap on found rebar marked as shown heron



RECP #: 764964

RECORDED 11/1/2019 AT 2:00 PM BK# 2645 PG# 1843
Debra K. Lee, CLERK OF LARAMIE COUNTY, WY PAGE 1 OF 1

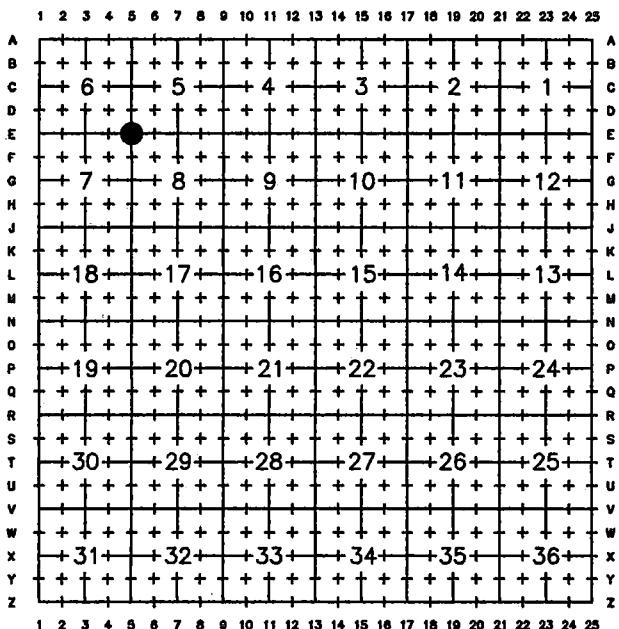


Monument Inscription

Date of Field Work: 11/18/2017

Office Reference: 2017-12

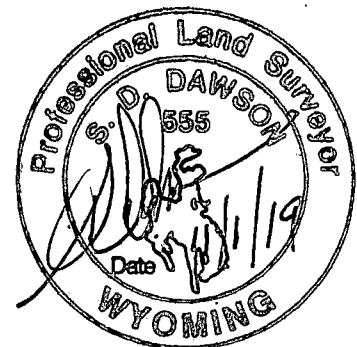
Cross Index Plat



Firm/Agency, Address
CORNERSTONE SURVEYING, LLC
4005 SNYDER AVENUE
CHEYENNE, WY 82001
(307) 421-9932

This corner record was prepared by me or under my direction and supervision.

SEAL & SIGNATURE



Corner Name Southeast Corner Section 6, T 15 N, R 60 W, 6th P.M.

Cross-Index No.: E-5

County: LARAMIE

WBPEPLS/PLSW: March 1994; PLSW January 1998, January 2019